

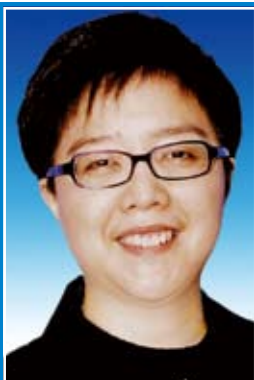


鄧淑明 博士

Dr TANG SHUK-MING, WINNIE

www.it20.org

www.it20.hk



- ◇ 14 years of IT experience
- ◇ Member, Digital 21 Strategy Advisory Committee, The Government of the Hong Kong Special Administrative Region (HKSAR)
- ◇ Member, Advisory Council on Food and Environmental Hygiene, The Government of the HKSAR
- ◇ Honorary Lecturer, Department of Electrical and Electronic Engineering, The University of Hong Kong
- ◇ Chairman, Steering Committee, eHealth Consortium

**Occupation :**

- Founder and Chief Executive Officer, ESRI China (Hong Kong) Ltd

**Public Services :**

- Member, Information & Communications Technology Industry Training Advisory Committee, The Government of the HKSAR
- Member, Special Task Force on Information Security, The Government of the HKSAR
- Subject Specialist (IT), Hong Kong Council for Academic Accreditation
- Vice-President, Internet Professional Association (iProA)
- Vice-President, Hong Kong United Youth IT Association
- Committee Member, Digital Solidarity Fund
- Honorary Advisor, Information Technology, The Hong Kong Girl Guides Association
- Guest Professor, North China Institute of Water Conservancy and Hydroelectric Power
- Chair, Panel of Advisors to the Cyberport Institute of Hong Kong, The University of Hong Kong
- Member, Advisory Board, Department of Systems Engineering & Engineering Management, CUHK
- Member, Advisory Committee for the Department of Land Surveying & Geoinformatics, HKPU
- Honorary Advisor, Geography Department, Hong Kong Baptist University
- Executive Director, Shenzhen Software Industry Association

**Qualifications :**

- 1999 PhD graduated from HKU
- 1992 BA graduated from HKU
- Council Member, Hong Kong Computer Society
- Board Director, International Association of Chinese Professionals in Geographic Information Science

**Awards :**

- Ten Outstanding Young Persons Selection 2006
- Women of Influence – Young Achiever of the Year Award 2004
- Ten Outstanding Young Digi Persons Selection 2001

Dr Winnie Tang holds a Ph.D. degree from The University of Hong Kong. She is the Founder and CEO of ESRI China (Hong Kong) Limited, one of the international offices of ESRI. ESRI is one of the world top 100 software companies, and the 4<sup>th</sup> largest privately-owned software company in the world. In Hong Kong, Dr Tang is a frequent guest speaker and guest professor for universities grooming our future IT talents and professionals. She also sits in the committees of various academic and industrial associations and is heavily involved in community services in Hong Kong.

With her strong belief and insight that Geographic Information Systems (GIS) can make a difference to our life, Dr Tang is one of the pioneers to bring the latest GIS solutions to Hong Kong. Some of the major GIS applications she has introduced to the public sector include the 'Country Park Information System' for Agriculture, Fisheries and Conservation Department, the 'Natural Slope Monitoring with Mobile GIS' for Civil Engineering Department, the 'Digital Mapping System' for Water Supplies Department, the 'Town Planning Information System' for Planning Department, the 'Third Generation Mobilizing System' for Fire Services Department, the 'Remote Monitoring System' for Electrical and Mechanical Services Department, the 'Database System for Handling Environmental Pollution Complaints' for Environmental Protection Department and the 'Artificial Intelligence Crime Analysis and Management System' for Hong Kong Police Force. She has also brought GIS technologies into the private sector including the 'New Passenger Enquiry System' for the Kowloon Motor Bus Company (1933) Limited, the 'West Rail – Rail Route Alignment and Land Resumption by GIS' for Kowloon-Canton Railway Corporation, as well as the 'Mobile Tourist Information and Promotion Services Systems' for Hong Kong Tourism Board. These GIS applications have helped to improve the effectiveness of services provided to the public and have significant contributions to the betterment of our society and the quality of life.

E-mail: [wtang@it20.org](mailto:wtang@it20.org), [wtang@it20.hk](mailto:wtang@it20.hk) Phone : 9042-7673

Fax : 2730-3772 Website: [www.winnietang.com](http://www.winnietang.com)